



Surgical Microscope iSee 9000



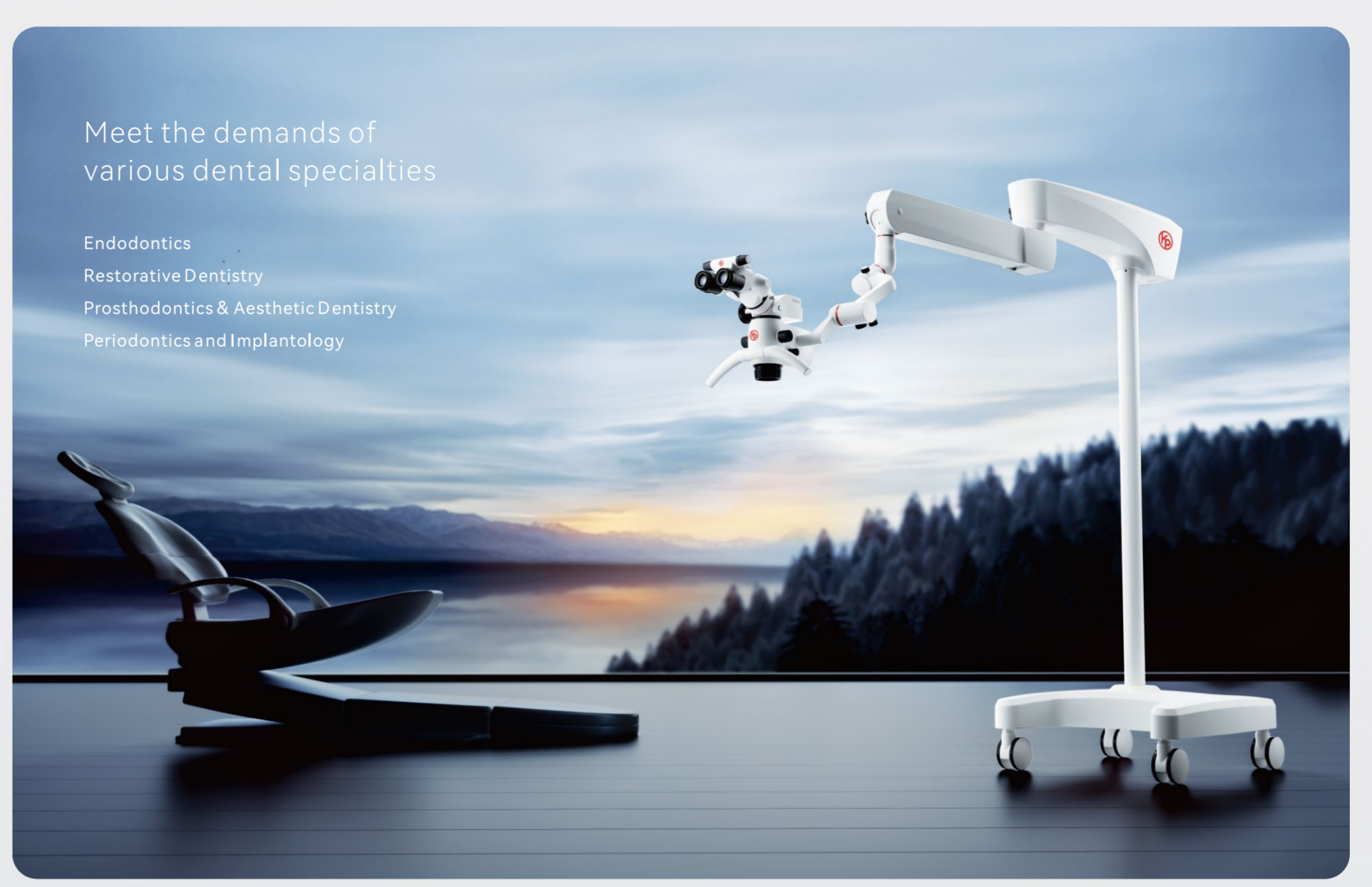
Gullin Kevin Peter Technology Co., Ltd.

Standard workshop: F2-F3, BLDG4,
HUAWEIFO ECO IND COOP ZONE,
North side of Linqiu Rd, Lingui Town, Lingui Dist.,
Gulin, 541100, P. R. China

Sales Dept: +86-773-5873196/2305099
After-sales Service Dept: 0773-5827898

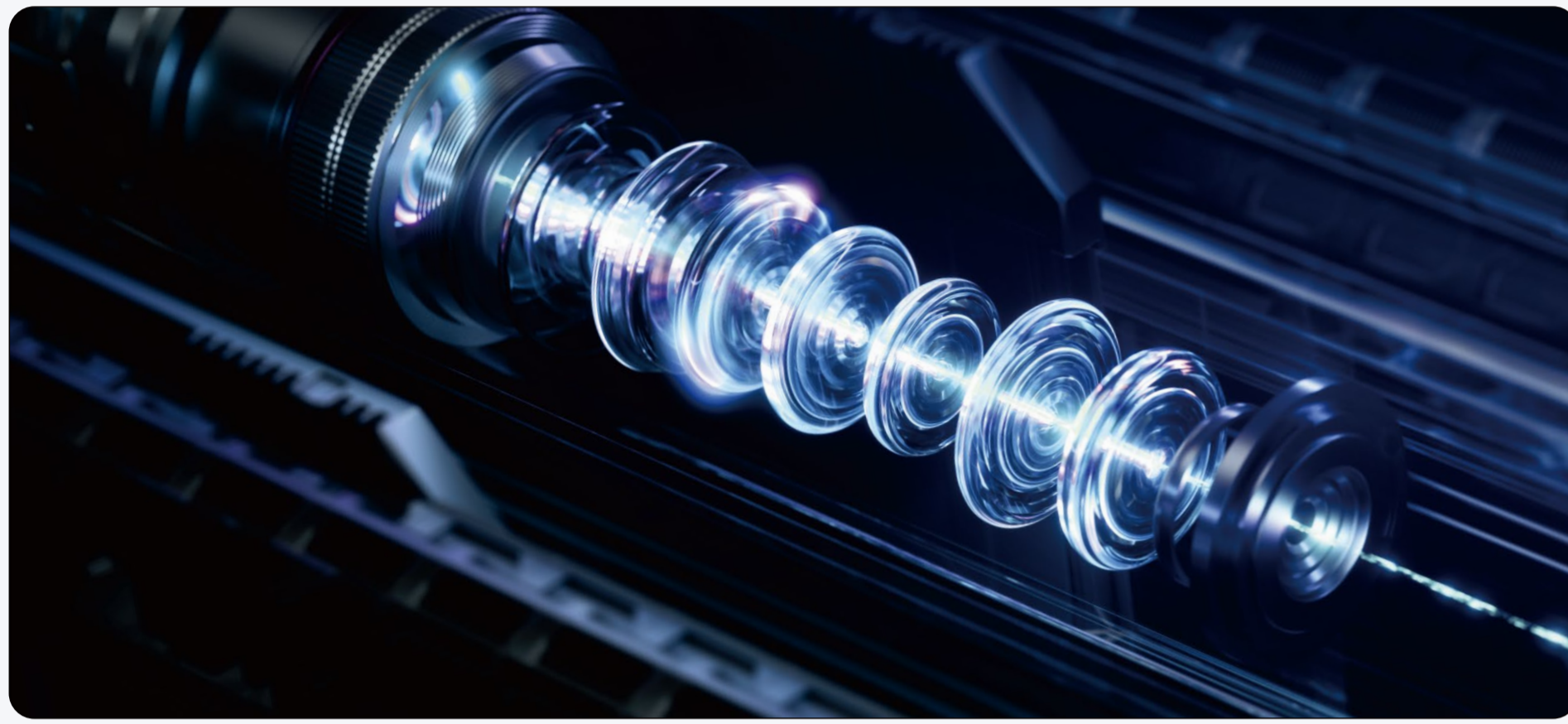


Deliver best optical quality and clear surgical field
Integrated 4K High Definition Video System facilitates doctor-patient communication. You can earn patients' trust by sharing visual information with them and creating comprehensive patient records.
Real-time video or high-definition recorded video for easy team sharing and communication, as well as case sharing and demonstration



Meet the demands of various dental specialties

- Endodontics
- Restorative Dentistry
- Prosthodontics & Aesthetic Dentistry
- Periodontics and Implantology



German SCHOTT lens Ultimate optical quality

German SCHOTT lens + Apochromatic + Multi-layer optical coating design
Crystal-clear display of every detail of operating space
Better color fidelity and photosensitive ability,
flexibly adapting to both highly bright and extremely dark photographing environments

Stepless zoom system No field-of-vision interruption

Drum-type magnification changer:
Field of view will be interrupted during magnification adjustment

Stepless/continuous magnification changer:
Zoom factor 0.4x-2.1x
Continuous zoom adjustment from 1.6x to 19.6x
Deliver uninterrupted field of view under the microscope for doctors

Varifocal objective lens 270mm variable working distance

Enough to cover the entire oral depth, no need of moving microscope or changing the working position. You only need to adjust the objective lens with the knob to achieve clear focusing quickly and efficiently.



190mm
Minimum focal length

270mm
Variable working distance

460mm
Maximum focal length



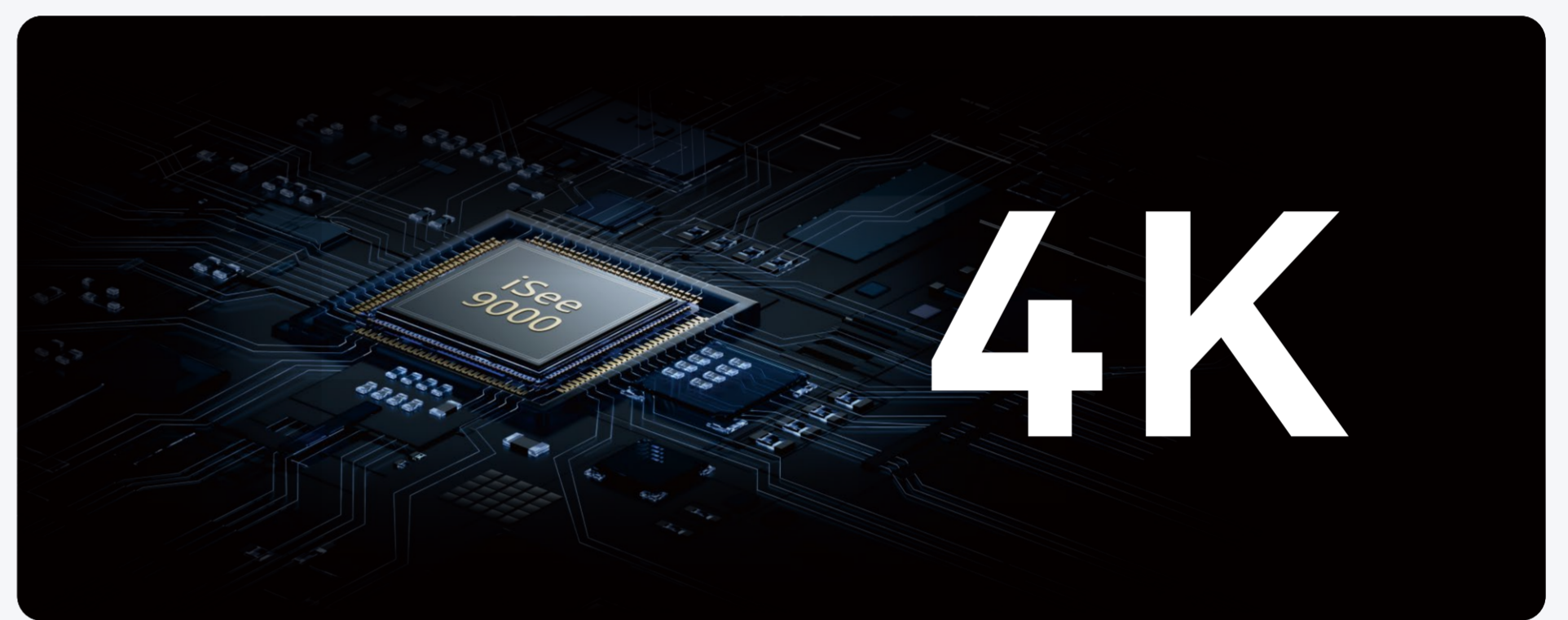
German gas spring Super balancing arm system

Super balancing arm system =
Spring balance system + Damping system
Compared to traditional single damping system, a spring balance system is designed additionally to offset the influence of gravity, so that the microscope main body can reach the best balance state, enabling smooth control of it for suspension at any desired position.



Small but smart

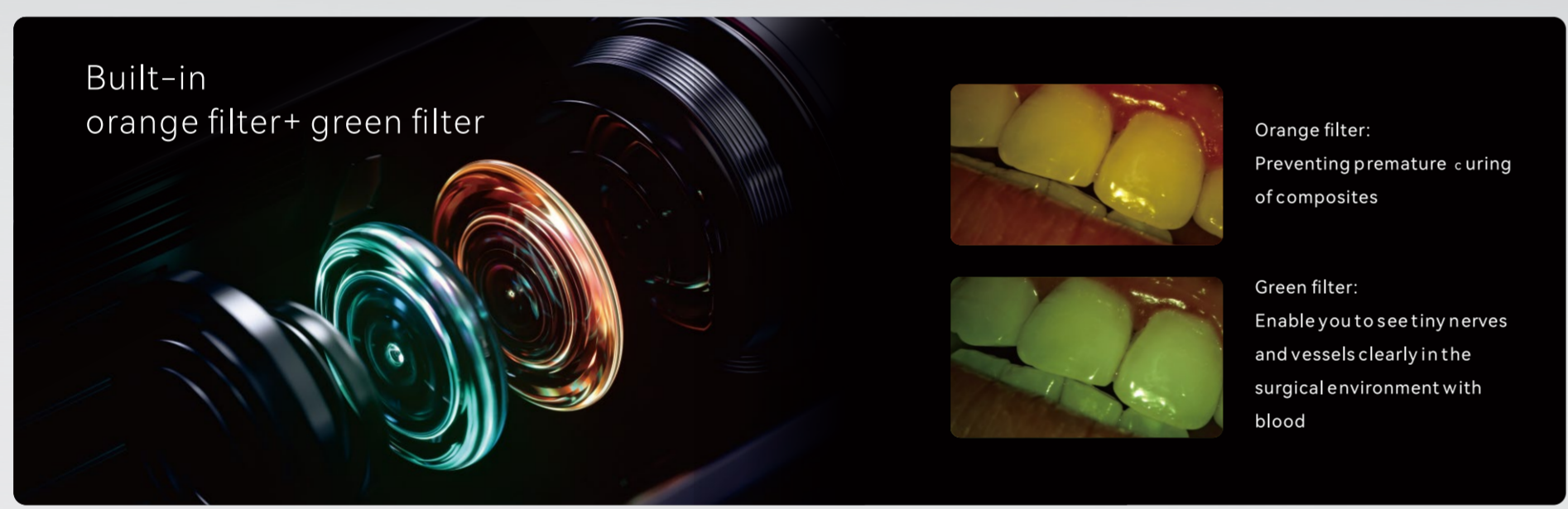
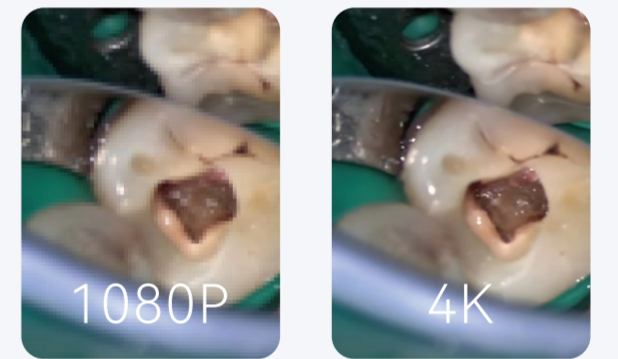
Four-in-one integrated module:
Extender + Splitter + Rotator + 4K High Definition Video System.
Compact and delicate body benefiting from the improved optical performance and the reduced accessory weight and volume



4K

Four-in-one integrated 4K module

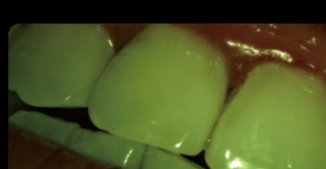
4K High Definition Video System:
4096 × 2160 ultra-high resolution, 41 times that of 1080P
Present you with HD images and videos for crystal-clear details and true-to-life color, which can be saved in the high-speed SD card for use.
Wireless foot pedal allows quick and easy control.



Built-in orange filter + green filter



Orange filter:
Preventing premature curing of composites



Green filter:
Enables you to see tiny nerves and vessels clearly in the surgical environment with blood



Long-lasting medical LED light source

Top medical LED light source with lifespan up to 60,000h
High color rendering index close to that of natural light
More true-to-life color
Relieve eye fatigue



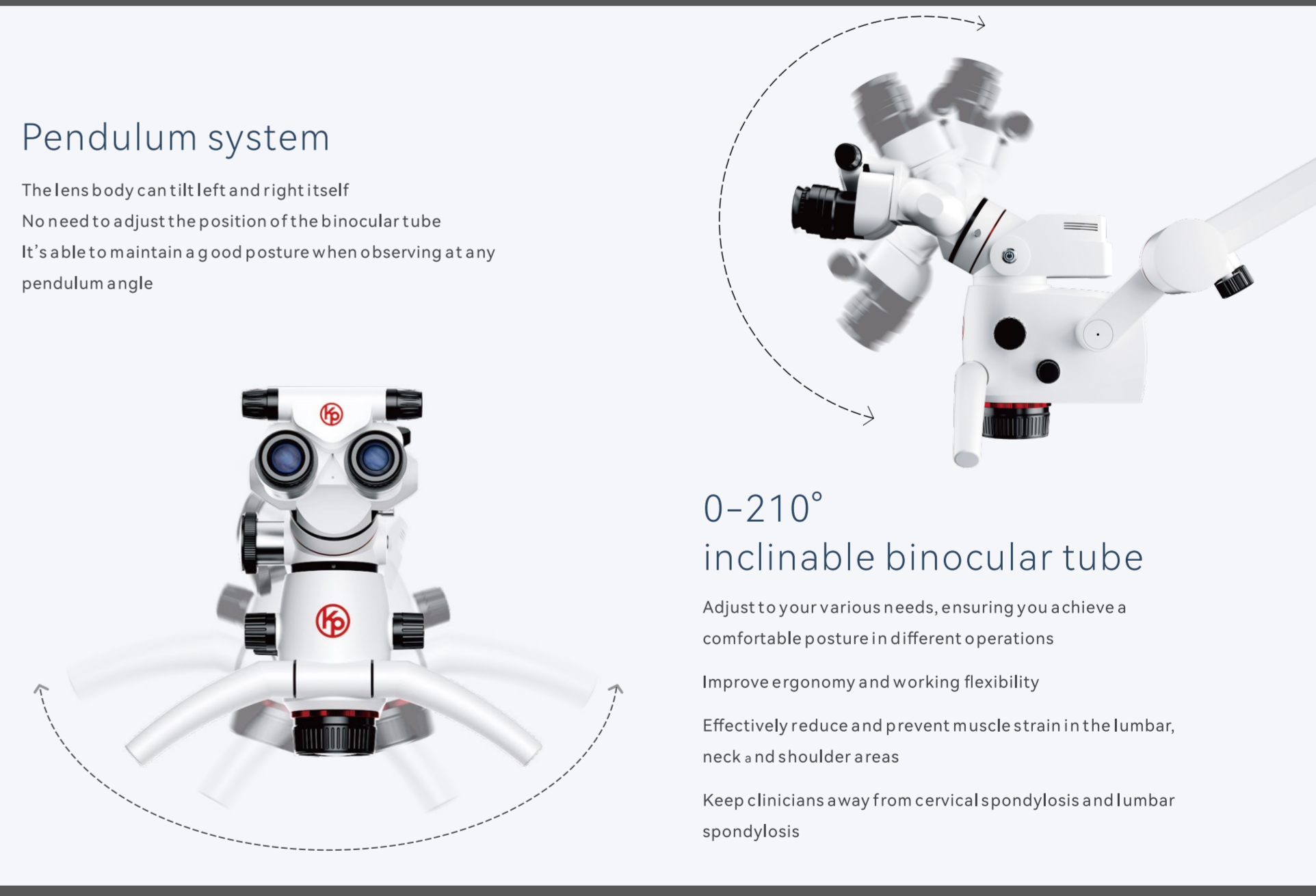
Enhance your patient's trust

Some patients are nervous about receiving treatment. To help them overcome the fear of the unknown, you can show them live images or play-backs supported by the integrated full HD camera and monitor. Besides, walking patients through the overall procedure is of great help same.
Also videos and images can be saved for each patient, allowing you and your team to easily access the patient's complete medical history for each visit, further strengthening patient's confidence.



Flexible and free operation

Pendulum design of binocular tube:
While the eyepiece tube maintains a horizontal observation position, the lens body can be tilted to the left or right.



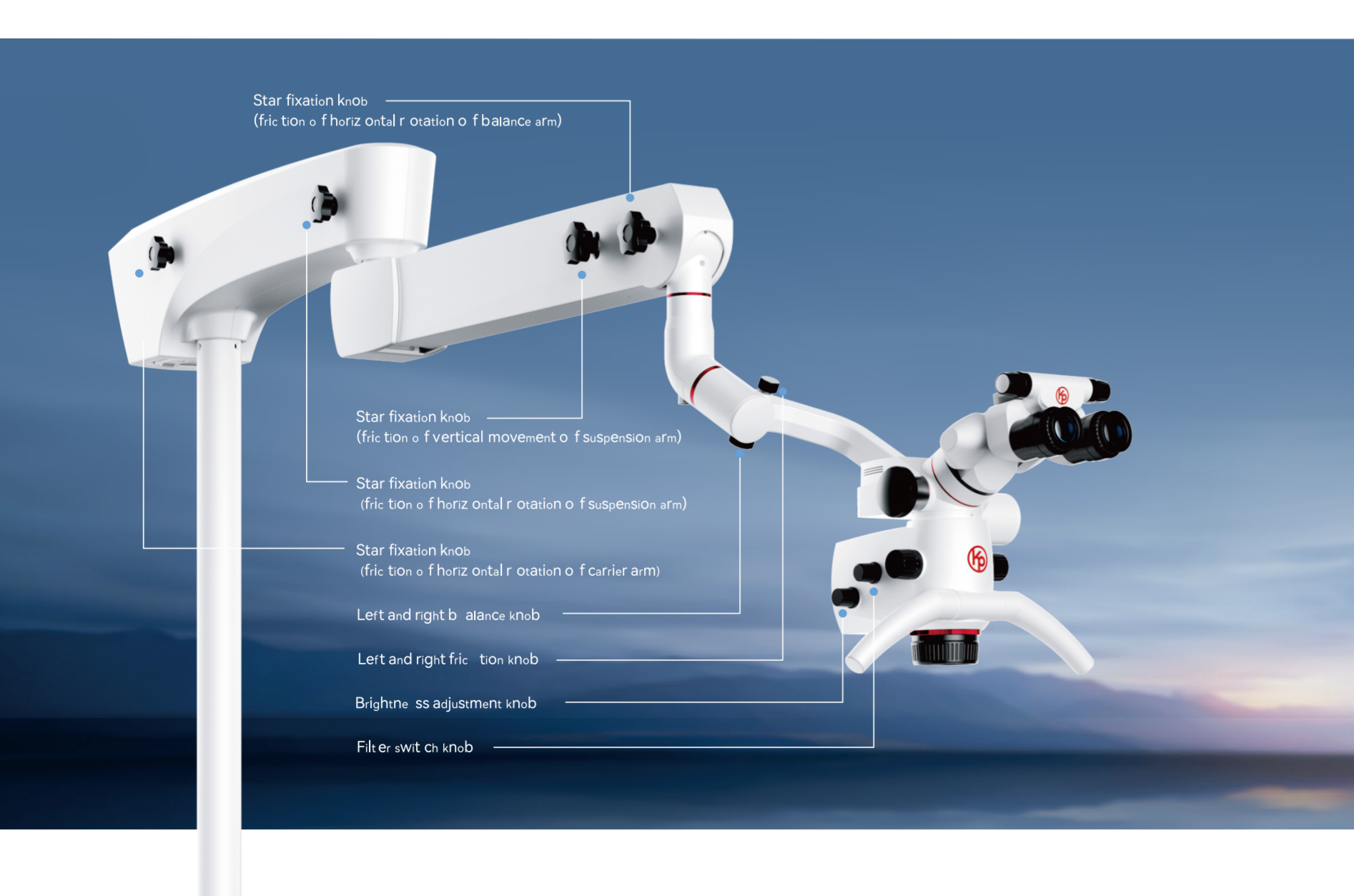
Pendulum system

The lens body can tilt left and right itself
No need to adjust the position of the binocular tube
It's able to maintain a good posture when observing at any pendulum angle

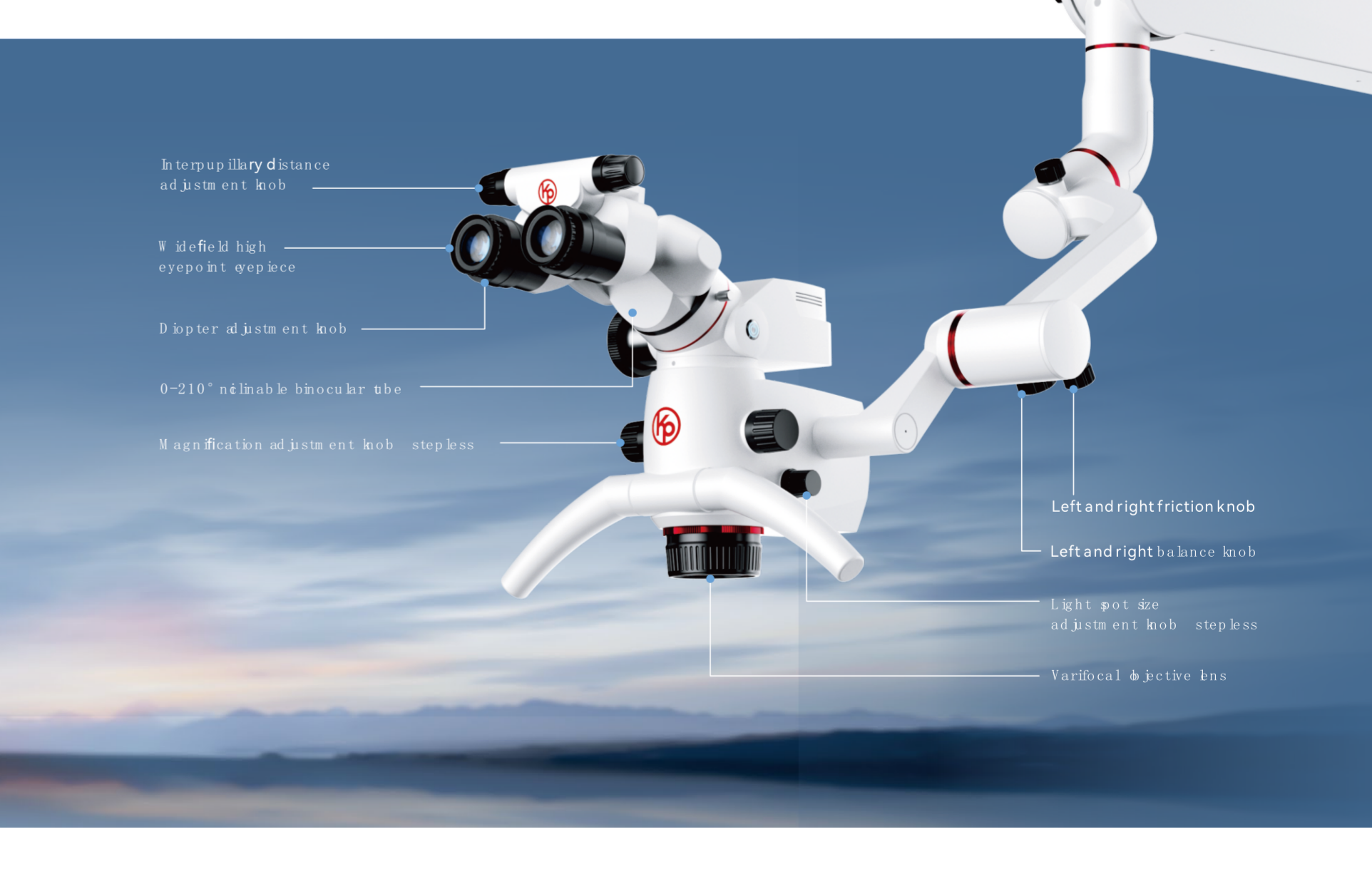


0-210° inclinable binocular tube

Adjust to your various needs, ensuring you achieve a comfortable posture in different operations
Improve ergonomics and working flexibility
Effectively reduce and prevent muscle strain in the lumbar, neck and shoulder areas
Keep clinicians away from cervical spondylosis and lumbar spondylosis



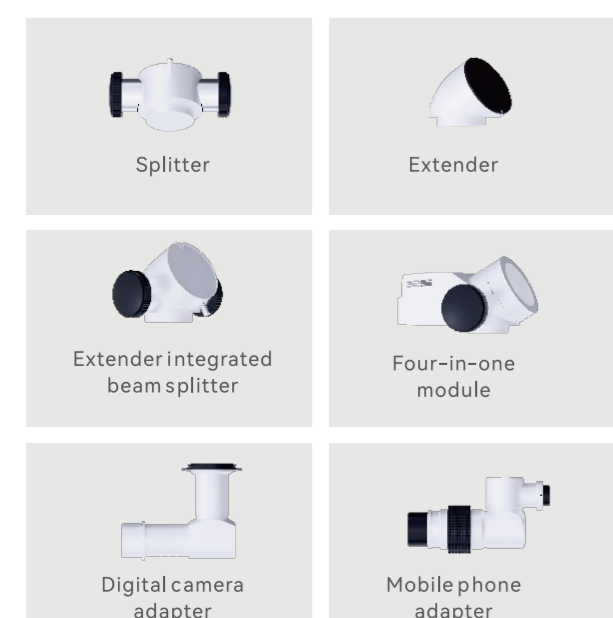
- Star fixation knob (fix. knob for horizontal rotation of fixation arm)
- Star fixation knob (fix. knob for vertical movement of suspension arm)
- Star fixation knob (fix. knob for horizontal rotation of suspension arm)
- Star fixation knob (fix. knob for horizontal rotation of fixation arm)
- Left and right bias knob
- Left and right fix. knob
- Right and left adjustment knob
- Fix. knob



- Inter-supply distance adjustment knob
- Field of view knob
- Diaphragm adjustment knob
- 0-210° inclinable binocular tube
- Magnification adjustment knob

- Left and right friction knob
- Left and right balance knob
- Light port adjustment knob
- Vertical adjustment knob

Optional accessories Flexible upgrade



Based on the standard configuration, there are various accessories optional:
Four-in-one module, Extender, Splitter, Extender integrated beam splitter, Digital camera adapter, Mobile phone adapter, etc.
Flexible upgrade with no time or location limit, ensuring your equipment suits your practice

Nano-silver ion antibacterial coating Reduce pathogen attachment

Nano-silver ion coating acts as an additional protector of the microscope overall body
Maintain a hygienic surface through antimicrobial nanosilver coating
Supporting clinic's hygiene protocols



Surgical Microscope			
Configurations	Standard configuration	High configuration	
Stepless zoom system (zoom factor 0.4x-2.1x)	☑	☑	☑
Binocular Tube 0-210° inclinable binocular tube	☑	☑	☑
Eye-piece 23mm ocular eyepiece, Diaphragm adjustment range 100mm, parallax-free adjustment range 12°-15mm	☑	☑	☑
Varifocal Objective lens F18.5 objective	☑	☑	☑
Fluorescence +HS200LX	☑	☑	☑
Light Source Illuminator 60W, steadily adjustable light source	☑	☑	☑
Field of View System 400mm x 30mm	☑	☑	☑
Filters Orange & Green	☑	☑	☑
Free Floating Balancing Arms	☑	☑	☑
Arm Length 1240mm	☑	☑	☑
Electron System LED illumination, continuously adjustable brightness, Max. 20000 lux	☑	☑	☑
Automatic Switching Device Theoretically automatic switching suspension arm, which automatically switches off when this arm reaches maximum height	☑	☑	☑
Mounting Pedestal other type, 14" height base	☑	☑	☑
Integrated Video System Four-in-one integrated module (High Definition Video System 3MP Encoder + Splitter + Rotator)	☑	☑	☑
Recording System 100 and 128GB fast storage of images and videos	☑	☑	☑
Digital Camera Adapter suitable for Canon, Nikon, Sony, etc.	☑	☑	☑
Mobile phone adapter	☑	☑	☑
Rotator	☑	☑	☑
Digital Camera Built-in power supply and HD cable	☑	☑	☑
Camera resolution 1080P/2048P/3072P/4096P	☑	☑	☑

Table Type (Training use)			
Configurations	Standard configuration	High configuration	
Microscope Main Body	Free configuration (parameters are the same as those in the standard configuration for the vertical distance)	☑	☑
Varifocal Objective lens	F18.5 objective	☑	☑
Free Floating Balancing Arms	Spring balance system + Damping system	☑	☑
Mounting	Standard Damping system (plate type)	☑	☑
Integrated Video System	4-in-one integrated module (Camera HD 1080P industrial camera 2 MPixel + Digital Camera Adapter + Microphone + 128GB 1080P recorder)	☑	☑

Included ☑ Not included ☒